

1 Requirements

The minimum requirements for using the PTS Connect® ProLink desktop platform are as follows:

PC:

- Operating System: Microsoft Windows 10 (64 bits)
- Specifications: 64 bits CPU and 4 GB RAM
- Connectivity: *Bluetooth*® and internet connection required
- Others: Administrator permissions to install and run the application
- Web Browser: Google Chrome™ or Mozilla Firefox®

Medical Devices:

- CardioChek® Plus or CardioChek PA professional analyzers using PTS Panels lipid panel and glucose test strips
- Connectivity: PTS Connect Adapter (Bluetooth)
- Blood Pressure: BP Monitor A&D UA-767PBT-Ci (Bluetooth)
- Scale: Weight Scale A&D UC-351PBT-Ci (Bluetooth)

PTS Connect ProLink Account:

- It is necessary to have a healthcare professional account created in the PTS Connect ProLink web platform

PTS Connect ProLink Desktop Hub Application:

- Download the application from the PTS Connect ProLink web platform

Note regarding the Bluetooth connection:

If the PC does not have integrated Bluetooth, it will be necessary to use a USB Bluetooth dongle (version 2.0 or higher).

2 Product Description

This user guide describes the functionality of the PTS Connect ProLink desktop hub application and its integration into the PTS Connect ProLink web platform.

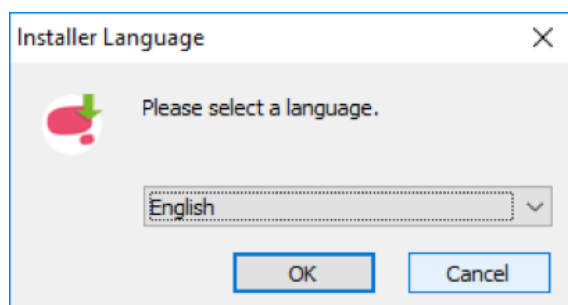
General Functionality

This application is an auxiliary tool for the retransmission of measurements to the PTS Connect ProLink web platform. To send the measurements from the PC to the platform, the following steps must be followed:

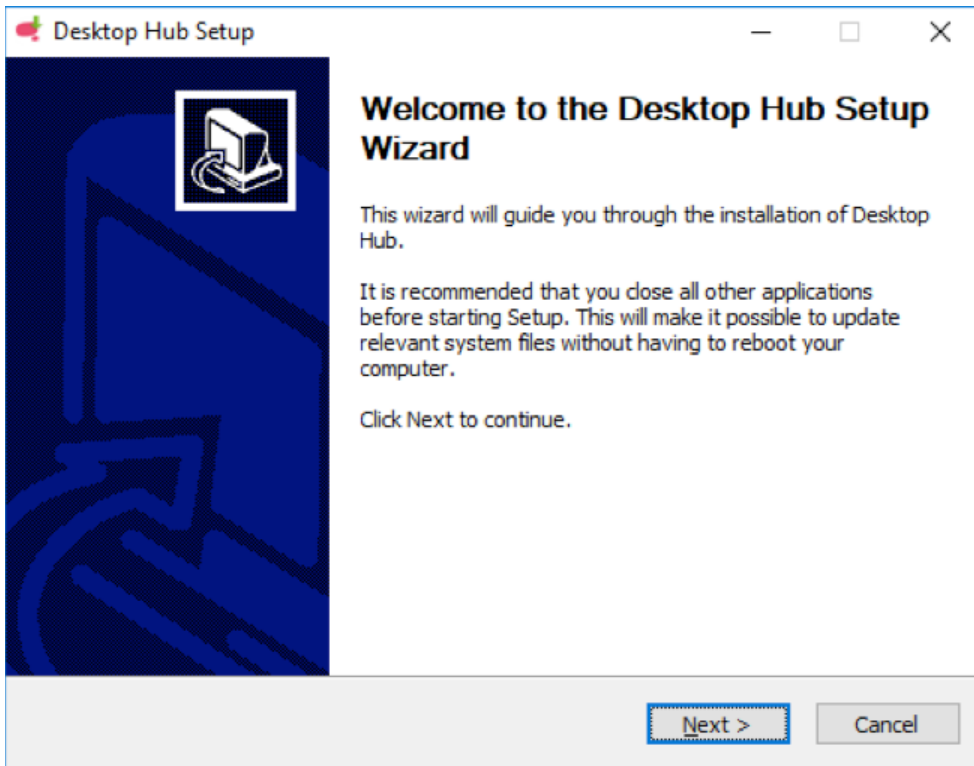
- Access the platform from **both the web application and the PC application** with the **same username and password**.
- **Ensure correct configuration of the devices.** A user with configured devices implies that they can add biometric measurements to the platform automatically instead of having to manually enter the results.
- **Linking Bluetooth devices to the PC.** From a Windows PC (see requirements), lipid profile and glucose values will be captured from a CardioChek Plus or CardioChek PA analyzer using a PTS Connect Adapter (featuring Bluetooth technology). A&D Medical Bluetooth devices will be used for blood pressure and weight. *See section, Connecting Devices.*
- **Taking measurements.** The biometric devices, after taking a measurement, will send the results to the PTS Connect ProLink desktop hub software using Bluetooth connectivity. The PTS Connect ProLink desktop hub software will then retransmit the measurement to the PTS Connect ProLink web platform.
- **Execution of the program and introduction of automatic measurements by the health professionals.** Before taking measurements from the selected devices, the web platform must be prepared and waiting for an automatic measurement in the corresponding step of the program execution. We recommend following the device order provided by the program.

3 Installation

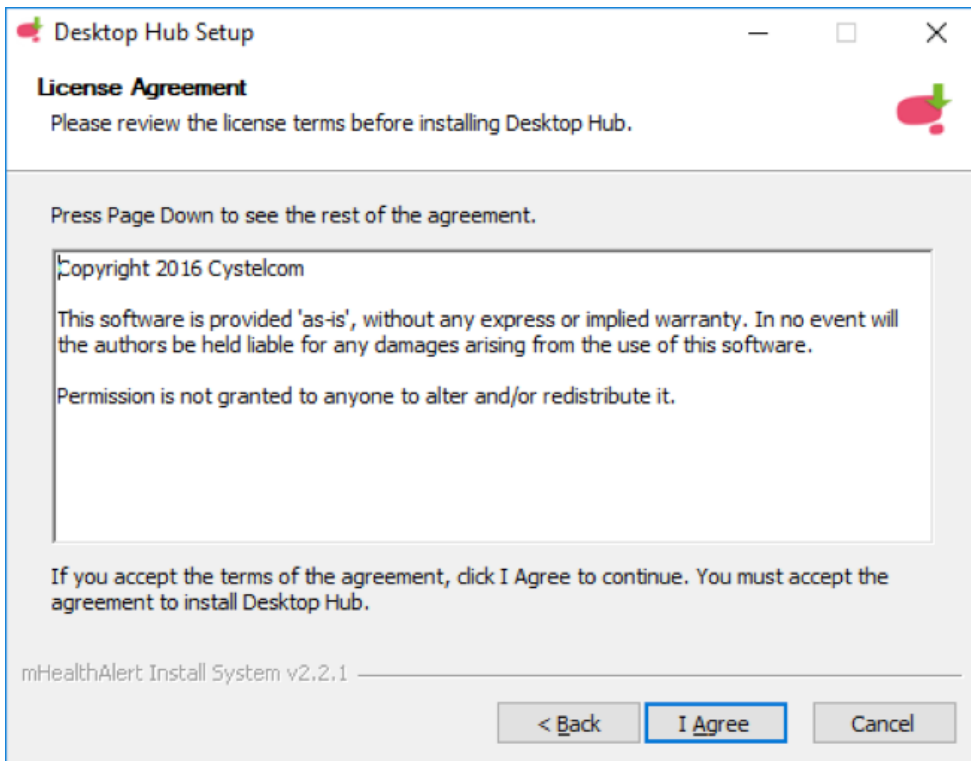
1. Download the PTS Connect ProLink desktop hub installer from the PTS Connect ProLink web platform and run the installer. The following screen will be displayed. Select the application installer language and click OK.



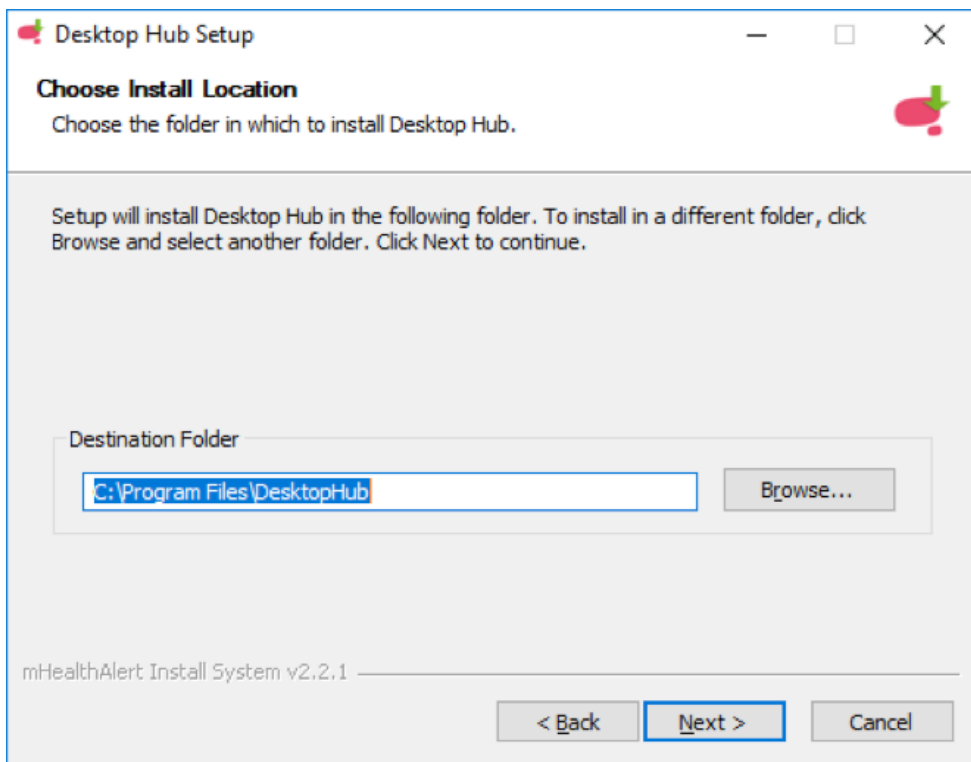
2. The installer welcome screen will appear. Click Next.



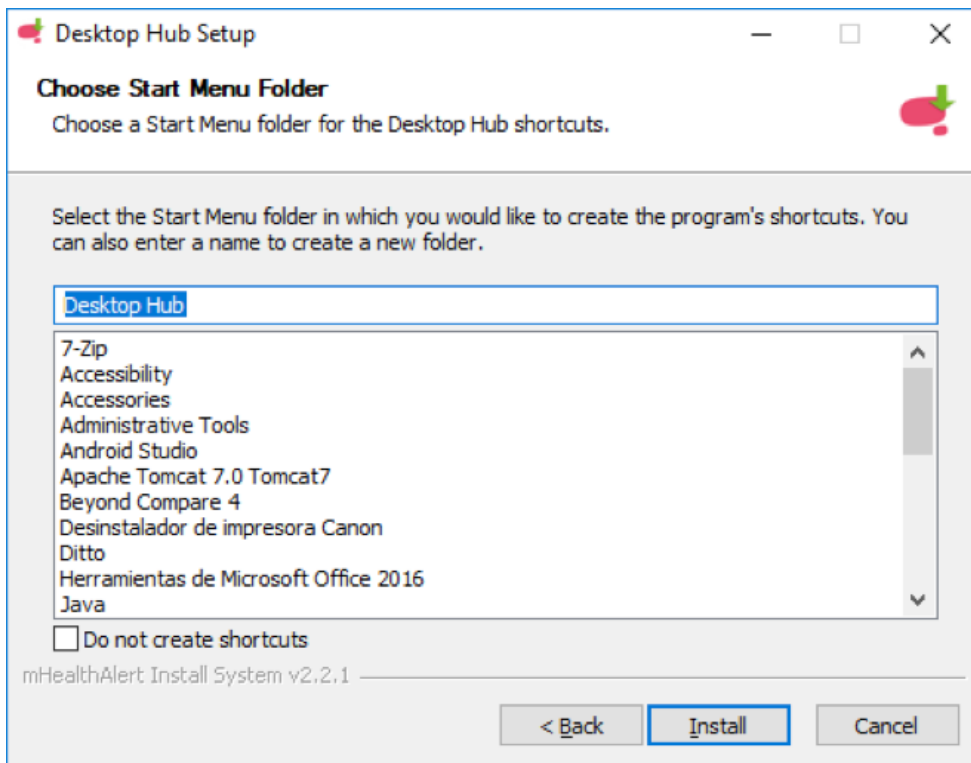
3. The license agreement will be displayed. Read the agreement and click the "I Agree" button to continue.



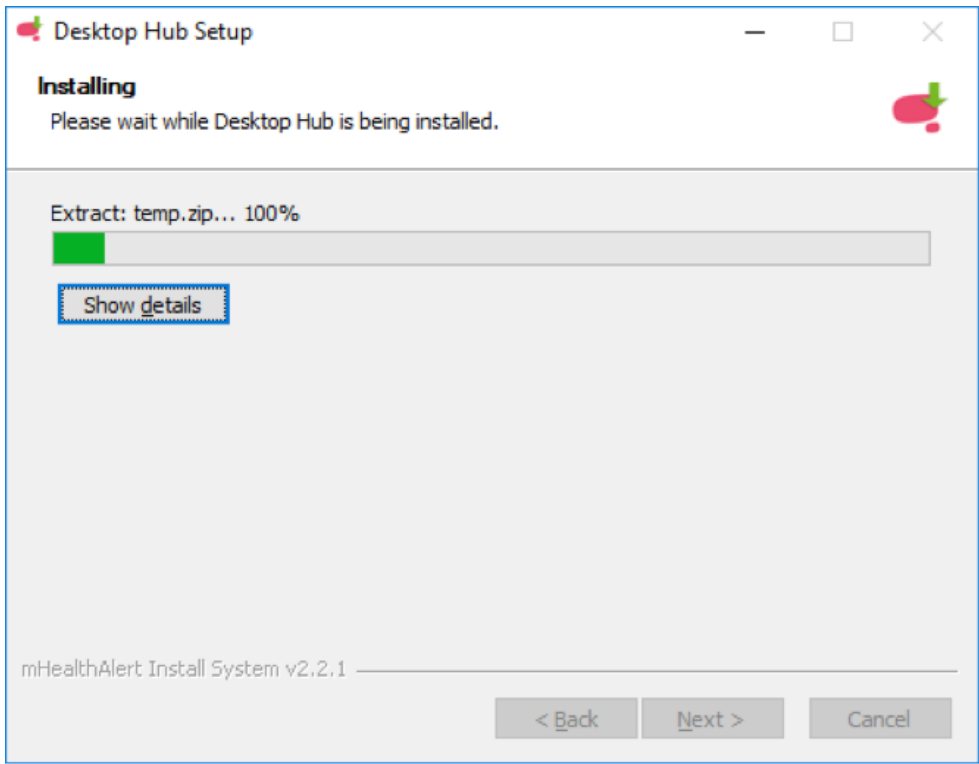
4. The user will then be prompted to enter the installation directory. Use the default directory listed in the Destination Folder box, click Next.



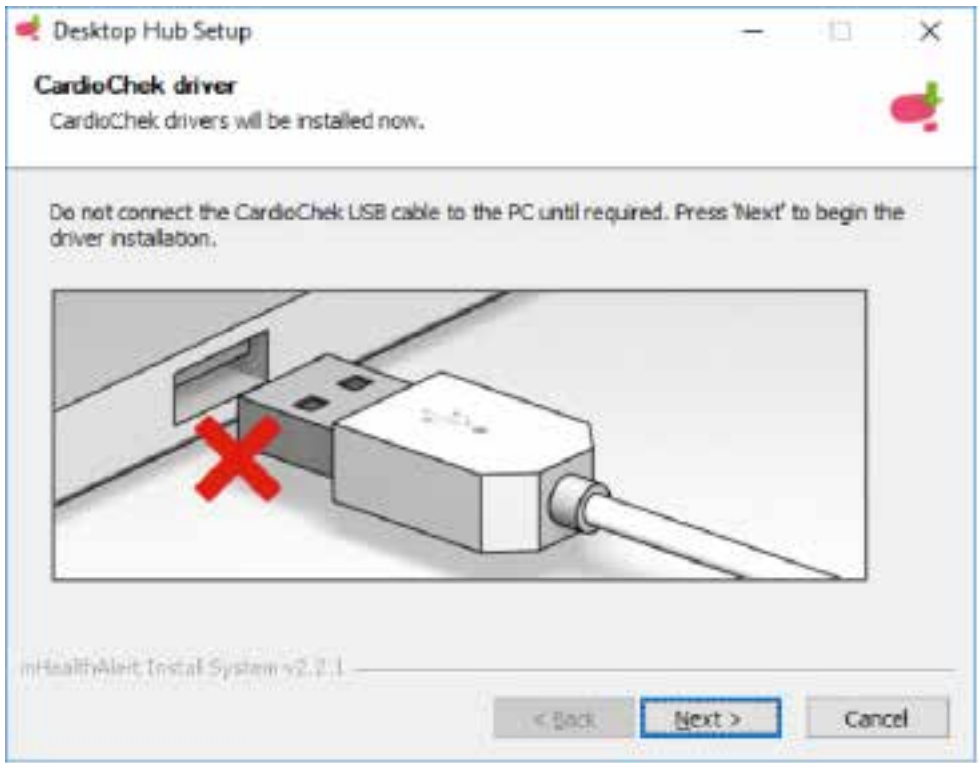
5. Choose Start Menu folder and click Install.



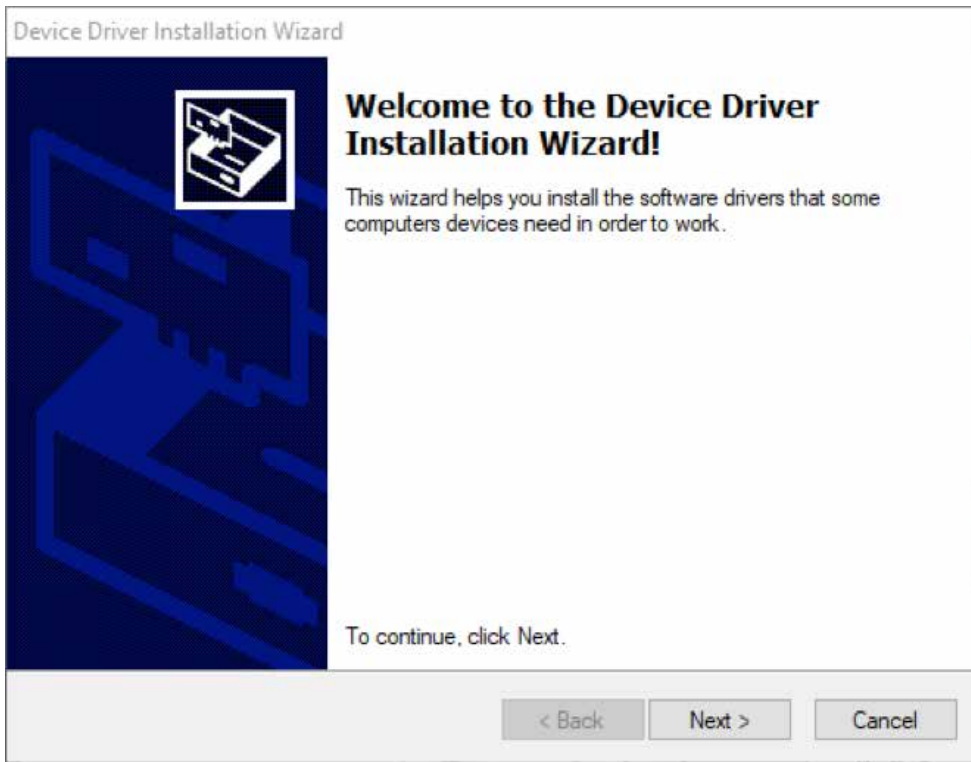
6. The PTS Connect ProLink desktop hub software will begin to install.



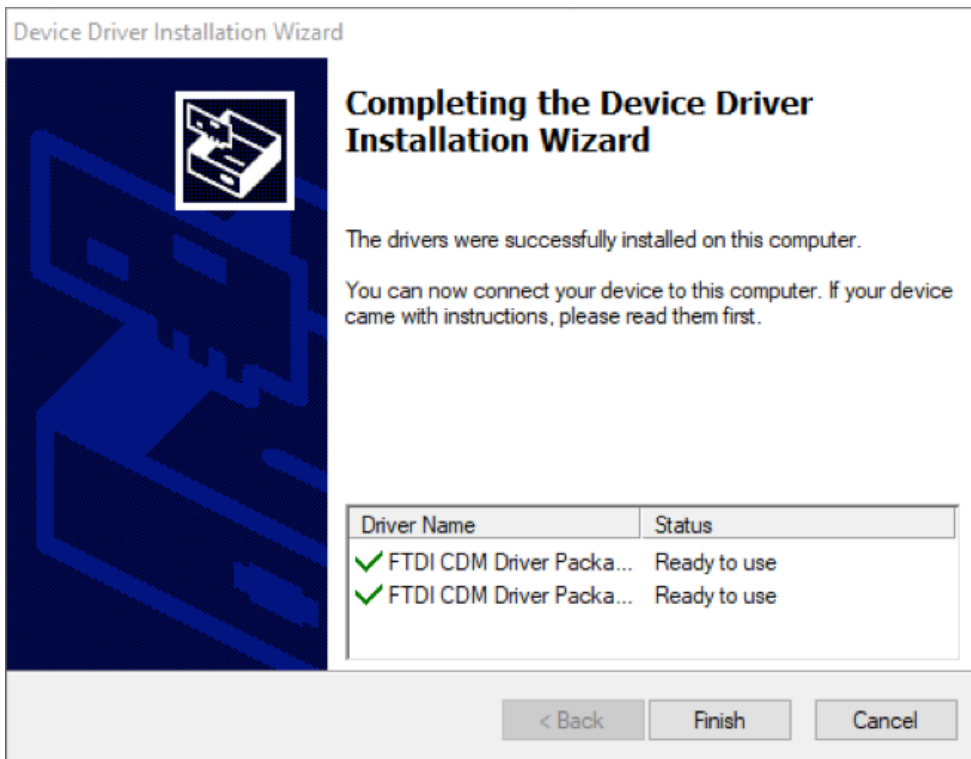
7. Once the installation is complete, you will then proceed to the driver installation. Please follow the onscreen instructions thoroughly, then click Next.



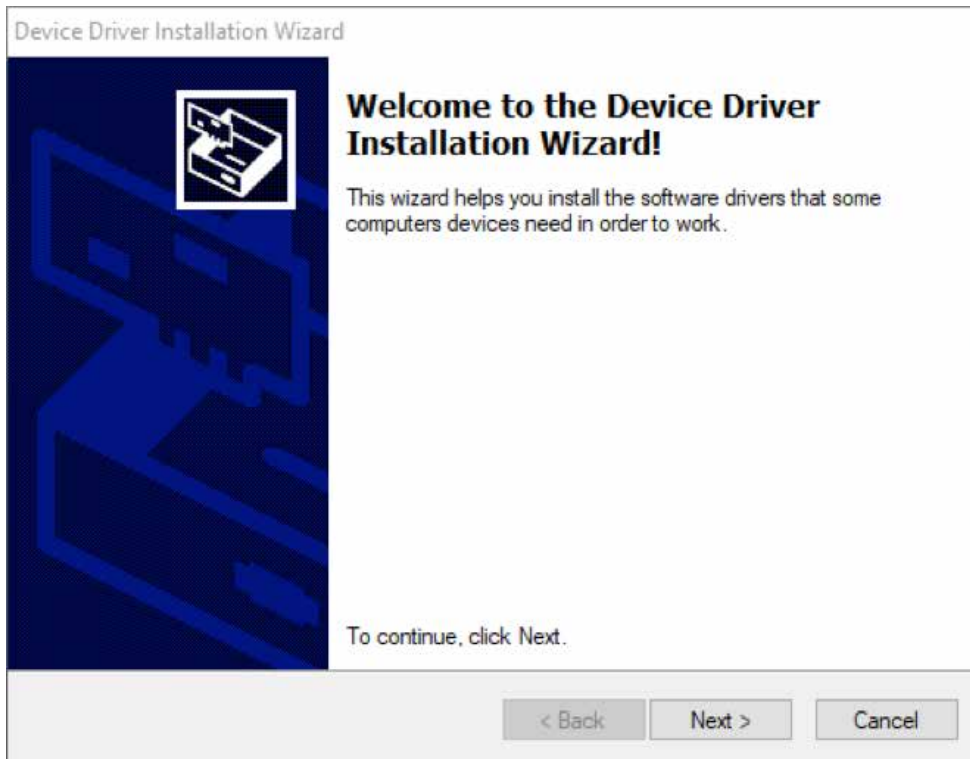
8. Click Next to start installation.



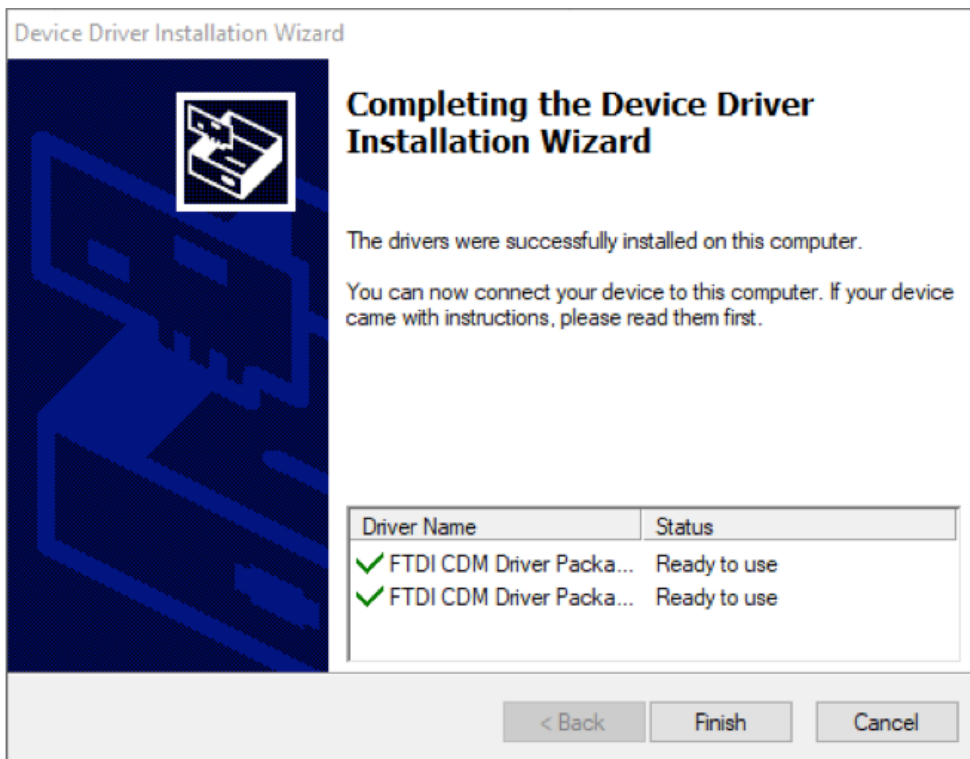
9. Click Finish to complete installation.



10. Plug a CardioChek Link® cable, if available, into a USB port on your computer and click Next. Otherwise, just click Next.



11. Click Finish to complete the installation.

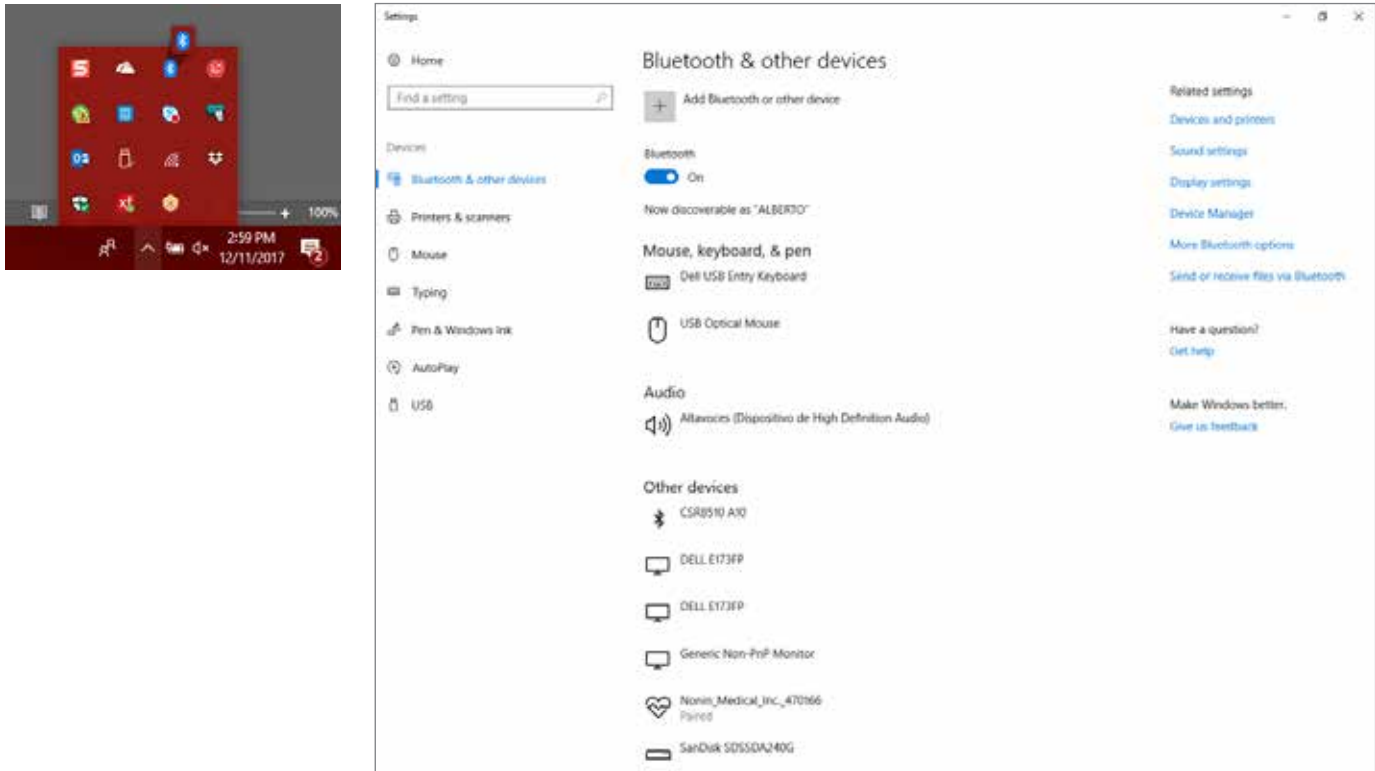


4 Connecting Devices

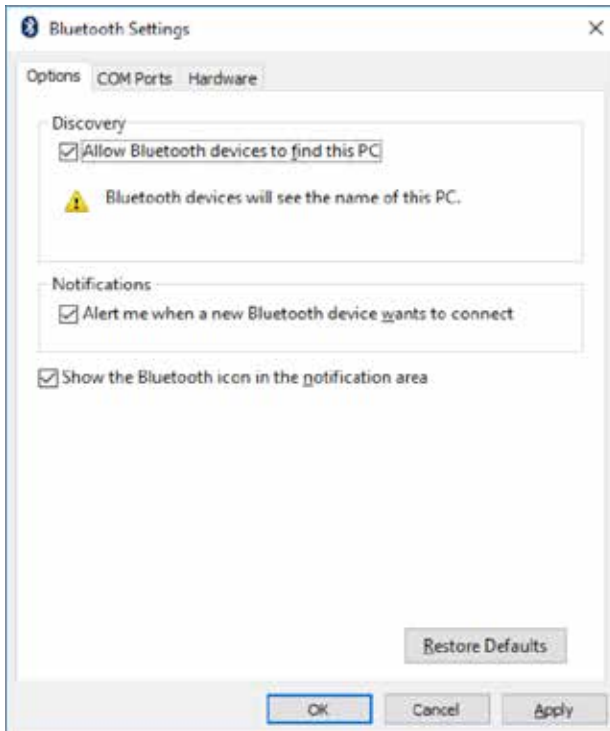
Before proceeding to the pairing of Bluetooth devices, you must check that the appropriate Bluetooth hardware configuration is available.

Bluetooth Configuration

1. Open the Bluetooth control panel. You can access it from the icon that appears in the Windows taskbar or from the Windows control panel.

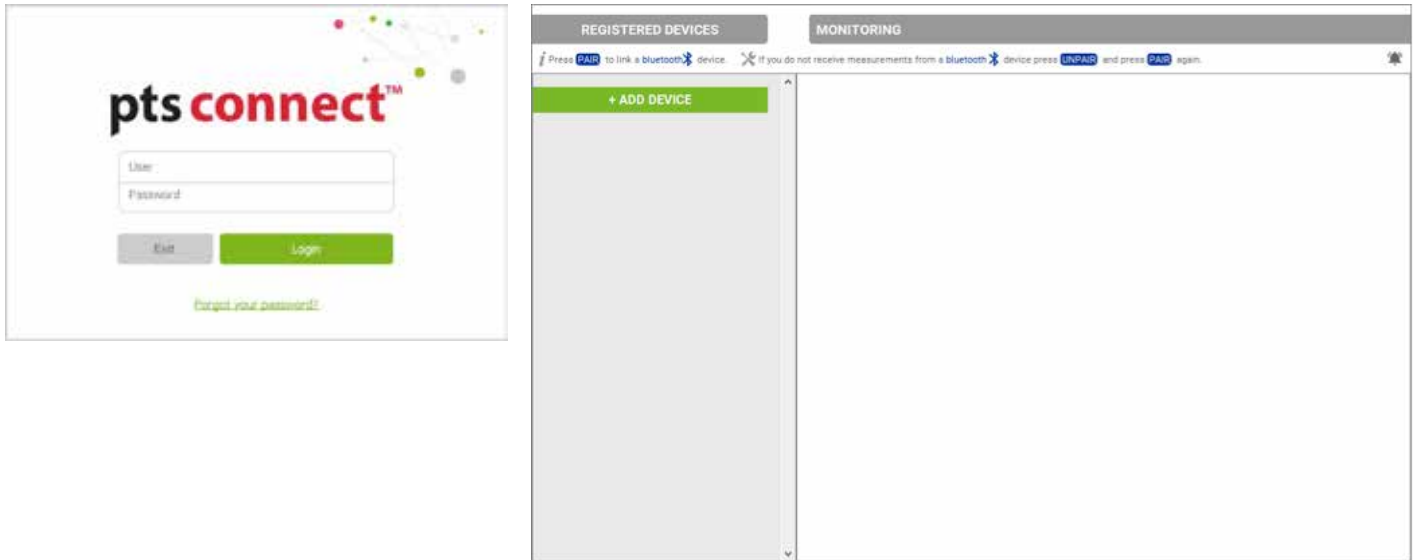


2. Open the Bluetooth hardware configuration. Enable the "Allow Bluetooth devices to find this PC" option. Some Bluetooth devices will require the activation of this permission to make the connection possible. Click OK to save settings.



Device Pairing

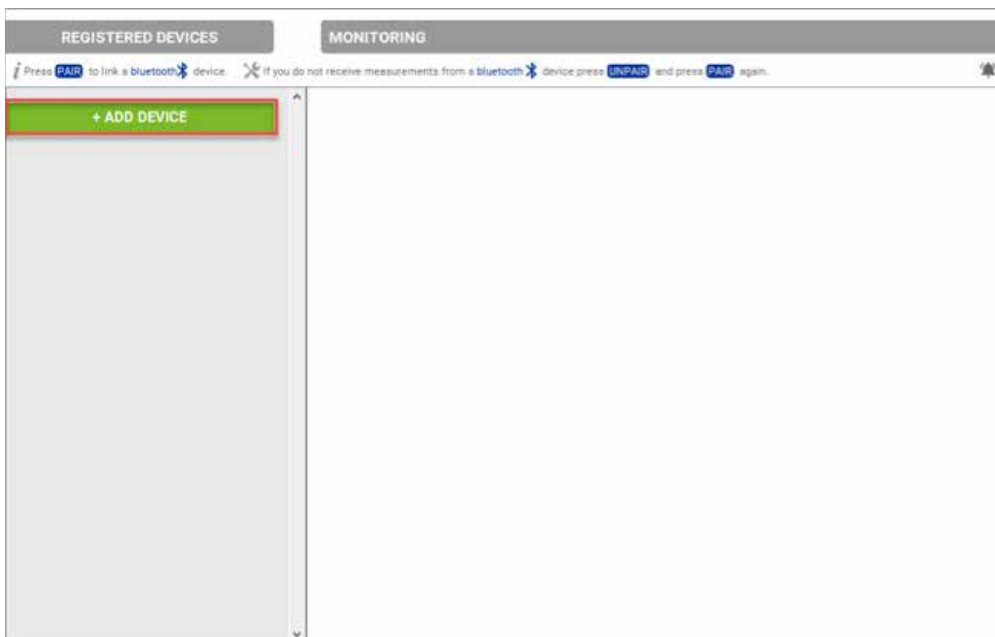
1. When starting the PTS Connect ProLink desktop hub software for the first time, you will see the following screen.
Enter your PTS Connect ProLink username and password and click Login.
Double click the Desktop icon to launch the PTS Connect ProLink desktop hub application.



2. The configuration and the identification of the devices (serial number and MAC address) must be correct so that these devices can be matched properly and establish a Bluetooth communication.
3. Once configured, the devices will appear on the left side of the screen.
4. In addition, it is mandatory to perform the pairing process through the PTS Connect ProLink desktop hub tool without using the Windows Control Panel or any other software.
5. Follow the steps below to add the CardioChek analyzer.

CardioChek Plus or CardioChek PA with the PTS Connect Adapter

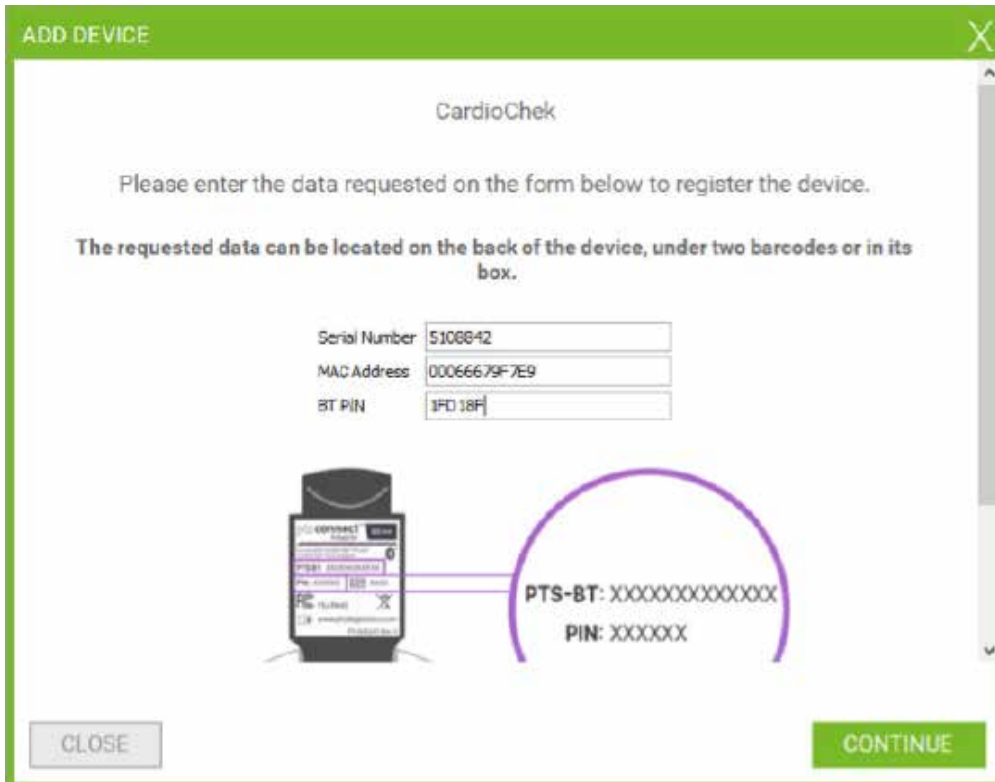
1. Click the +ADD DEVICE Button.



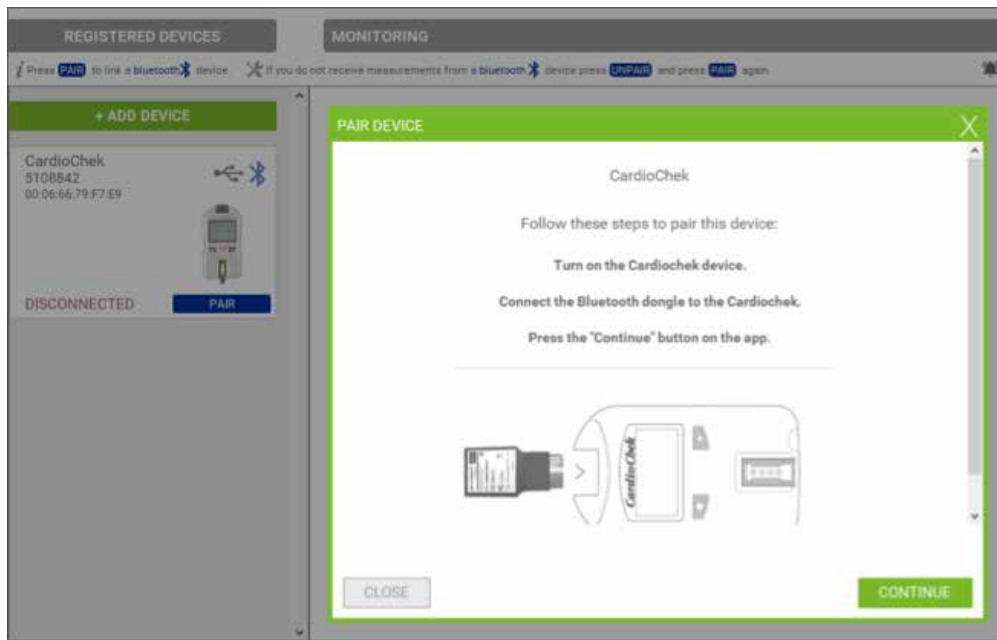
2. Select the CardioChek analyzer from the list of devices.



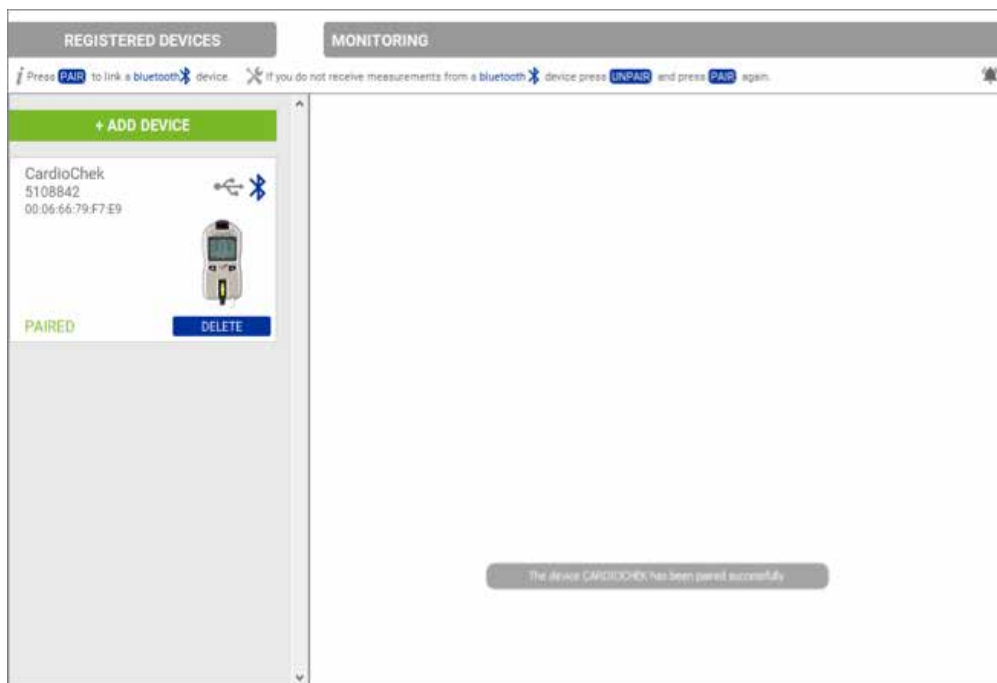
3. Enter the serial number of the CardioChek analyzer, MAC address, and Bluetooth PIN of the PTS Connect adapter, then click CONTINUE.



4. Turn on the CardioChek analyzer and plug in the PTS Connect adapter. Click CONTINUE.



5. The PTS Connect ProLink desktop hub software will begin pairing the CardioChek analyzer.



- You can now test the connection by either running a sample test on the analyzer or sending a result from the memory to the PTS Connect ProLink desktop hub application. Once the result has been sent, you will see the result in the PTS Connect ProLink desktop hub application window.



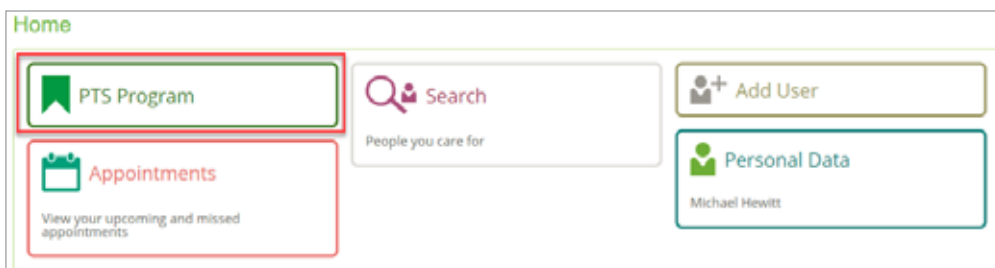
5 Measurement Transfer to the the PTS Connect ProLink Web Platform

In order to receive measurements in the web application, a program session must be started and waiting at a screen indicating that the measurement can be taken.

It is at this time, and not before, when you take the measurement with the device and wait for the web screen to receive the measurement sent by the PTS Connect ProLink desktop hub.

Log into the web application using the same username and password that you used to log into the PTS Connect ProLink desktop hub application.

- Select the program by clicking the Program Tile.



- Next, either search for a user by entering the patient's name, or add a user by clicking the +Add User button.



3. Add in the required information indicated by the * next to the field. Click Next after all information has been entered.

Add User

* ID (Max: 32 characters)
XXXXXXXXXX

* First and Middle Name
John

* Last Name
Smith

Email
john@smith.com

* Birth Date
02/03/1948

* Gender
 Male Female

Phone

* Language
English

Additional information

Address

* Country
USA

* Region
Indiana

* Time zone
EasternNew York

City

ZIP Code

4. Step 1 of the program will appear. Now is the time to run the test on the CardioChek analyzer. Once the test has completed, the results will automatically appear.

Programs / PTS Program STOP PROGRAM

1 **Take Measurement: Lipids & Glucose** > 2 **Take Measurement: ATc Test** > 3 **Take Measurement: Scale** > 4 **Take Measurement: Blood Pressure** > 5 **Wellness Report**

Lipids & Glucose

[See More](#)



Ready...
Start taking your measurement


Click Next to move to Step 2.

Programs / PTS Program STOP PROGRAM

1 Take Measurement Lipids & Glucose > 2 Take Measurement A1c Test > 3 Take Measurement Scale > 4 Take Measurement Blood Pressure > 5 Wellness Rep

Lipids & Glucose

[See More](#)



Measurement date: 11/06/2017 09:00 AM

Cholesterol:	145 mg/dL
HDL Cholesterol:	55 mg/dL
Triglycerides:	104 mg/dL
Glucose:	308 mg/dL
LDL Cholesterol:	70 mg/dL
TC/HDL Ratio:	2.70
LDL/HDL Ratio:	1.30
Non-HDL Cholesterol:	91.00 mg/dL

If measurement reading is not equal to device

[Try again](#)

[Add measurements manually](#)

[Cancel](#) [Skip >>](#) [Next >](#)

5. Manually enter the HbA1c value, then click Next to move to next step.

Programs / PTS Program STOP PROGRAM

2 Take Measurement A1c Test > 3 Take Measurement Scale > 4 Take Measurement Blood Pressure > 5 Wellness Report > 6 Summary

A1c Test

[See More](#)



Measurement date: 11/08/2017 09:02:50 AM

HbA1c: 5.3%

[Back](#) [Skip](#) [Next](#)

6. If using a connected scale, the weight value will be automatically transferred into the web application. If not using a connected scale, enter the weight manually, along with the height. Click Next to move to the next step.

Programs / PTS Program STOP PROGRAM

3 Take Measurement Scale > 4 Take Measurement Blood Pressure > 5 Wellness Report > 6 Summary

Scale

Measurement date: 11/08/2017 09:04:41 AM

Weight: 135 lbs

Height: 5'0" 9 in

[Back](#) [Skip](#) [Next](#)

7. If using a connected blood pressure monitor, the values will be automatically transferred into the web application. If not using a connected blood pressure monitor, enter the blood pressure and pulse values manually. Click Next to move to the next step.

Programs / PTS Program STOP PROGRAM

4 Take Measurement Blood Pressure > 5 Wellness Report > 6 Summary

Blood Pressure



Measurement date: 11/09/2017 09:07:05 AM

SYS: 120 mmHg
DIA: 80 mmHg
Pulse: 67 bpm

< Back Skip >> Next >

8. Complete the "Do You smoke?" and the "Do you suffer from diabetes?" questions and click Next to move to the final step.

Programs / PTS Program STOP PROGRAM

5 Wellness Report > 6 Summary

Wellness Report

Wellness Report

Age: 48 Do you smoke? Yes No Do you suffer from diabetes? Yes No

2. Measurement Summary

Total Cholesterol (mg/dL)	145	Weight (Lbs)	165.0	SYS (mmHg)	120
HDL Cholesterol (mg/dL)	55	Height (ft in)	5' 9"	DIA (mmHg)	80
Triglycerides (mg/dL)	104	Body Mass Index (kg/m ²)	27.32		
Glucose (mg/dL)	308				
LDL Cholesterol (mg/dL)	70				
TC:HDL Ratio	2.7				
LDL:HDL Ratio	1.3				
Non-HDL Cholesterol (mg/dL)	91				

< Back Skip >> Next >

9. The Measurement Summary and Wellness Report are displayed. Click Print at the bottom of the report to print a copy of the report for the participant. Click Finish to complete the participant screening. The program will return to the main dashboard for the next participant screening.

Summary

Summary

1. Measurement Summary

Date	Device	Manufacturer	Model	Measurement	Thresholds	Value
11/08/2017 09:32 AM	A1c Test			HbA1c (%)	[7 - 7]	5.3
11/08/2017 09:34 AM	Scale		BMI	Weight (lbs) Height (in) BMI (kg/m ²)		185.0 5' 9" 27.32
11/08/2017 09:37 AM	Blood Pressure	ASD Medical	UA-767FBT-C1	SYS (mmHg) DIA (mmHg) Pulse (bpm) MAP (mmHg)	[100 - 140] [60 - 90] [60 - 80]	120 80 67 83
11/08/2017 09:50 AM	Lipids & Glucose	PTS	CardioChek	Cholesterol (mg/dL) HDL Cholesterol (mg/dL) Triglycerides (mg/dL) Glucose (mg/dL) LDL Cholesterol (mg/dL) TC/HDL Ratio LDL/HDL Ratio Non-HDL Cholesterol (mg/dL)	[150 - 240] [40 - 100] [75 - 200] [90 - 140] [80 - 160]	145 55 104 300 78 2.70 1.30 91.05

2. Wellness Report

CHOL
mg/dL

145 OPTIMAL
mg/dL

Cholesterol is a soft, fat-like, waxy substance found in the bloodstream and in all of your body's cells. Cholesterol is an important part of a healthy body because it's used for producing cell membranes, certain hormones and vitamins, and serves other necessary body functions. When there is too much cholesterol in your blood, it can build up in your arteries and increase your chances of developing heart disease or suffering a stroke.

HDL
mg/dL

55 SOBERLINE
mg/dL

HDL is a "good" cholesterol because it helps remove other forms of cholesterol from your bloodstream. The higher your HDL, the better. It's often called "good" cholesterol because it helps remove other forms of cholesterol from your bloodstream. The higher your HDL, the better. It's often called "good" cholesterol because it helps remove other forms of cholesterol from your bloodstream. The higher your HDL, the better.

← Back

Print
Finish

6 Troubleshooting

If you cannot pair Bluetooth devices, follow these guidelines:

1. First, verify that the identification of biometric devices is correct. Check that the serial numbers and MAC addresses that appear in the PTS Connect ProLink desktop hub application match those of the physical devices in your possession.
2. Verify that you have the Bluetooth hardware installed and the appropriate visibility settings.
3. Ensure that the drivers for the Bluetooth adapter have been installed correctly.
4. If you disconnected the Bluetooth adapter when the application was running and you have problems communicating with a device, close the application and return to Step 2.
5. If you have more than one Bluetooth adapter connected to your PC, you are likely to have communication problems. Please use a single adapter and redo Step 2.
6. If problems persist, Bluetooth hardware may require a system restart. If all troubleshooting steps fail, consider changing your Bluetooth adapter or check with your administrator.

If the results from the connected devices are not transferring to the web application:

1. First, verify that the identification of biometric devices is correct. Check that the serial numbers and MAC addresses that appear in the PTS Connect ProLink desktop hub application match those of the physical devices in your possession.
2. Verify that you are logged into the Web Application and the PTS Connect ProLink desktop hub software with the same username and password.
3. Verify that the device is properly set up in the PTS Connect ProLink desktop hub software.

7 Customer Service

For assistance with PTS Connect products, call PTS Diagnostics Customer Service (M-F, 6 a.m. - 9 p.m. US EST):

Toll-free in the US: 1-877-870-5610 | **Direct:** +1-317-870-5610 | **Fax:** +1-317-870-5608

Email: customerservice@ptsdiagnostics.com | **Website:** ptsdiagnostics.com

The *Bluetooth*® word mark and logos are registered trademarks owned by Bluetooth SIG, Inc. and any use of such marks by PTS Diagnostics is under license.

PTS Connect, CardioChek, CardioChek Link, and MEMo Chip are trademarks of Polymer Technology Systems, Inc.

All other trademarks are the property of their respective owners. © 2017 Polymer Technology Systems, Inc.



8 Explanation of Symbols



Manufacturer